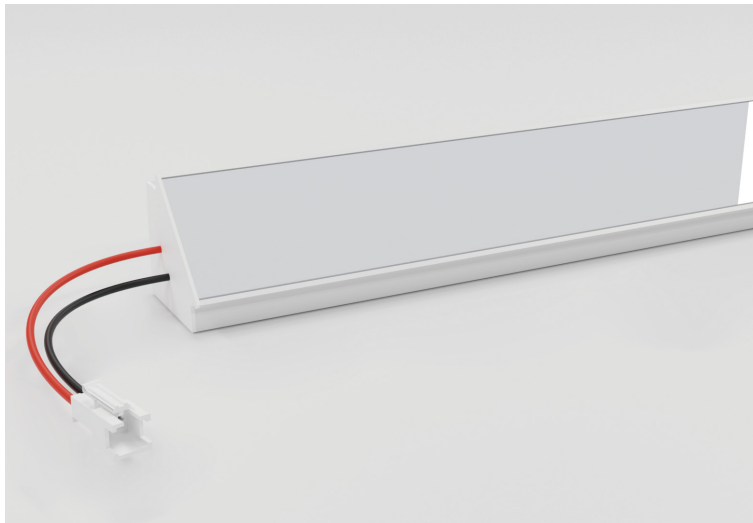


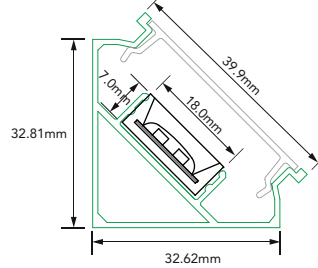
# ALCSP03S02 Mono Color Silicone LED Linear Flex Fixture

ALCSP03S02-24V-2835-256-2200K~6500K

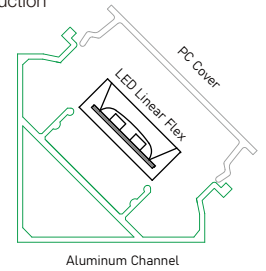
## Specification



Dimension



Struction



Beam Angle



Ansi C78.377



SDCM<3



One Bin



Dimmable



IP Rating



Ambient Temp.



Class 3



LM-80



IK08



UV resistant



Anti-Yellowing



Flame Resistant



Solvents Resistant



Dirt Resistant



CE



RoHS



Warranty

## Technical Parameters

Electrical	
Input Voltage	24V DC
Power Consumption	18W/m
Physical	
LED Count	256 LEDs/m
Cutting Unit	32 LEDs
Cutting Unit Length	125 mm
PCB Width	15mm
Output	
LED Light	Epistar SMD LED 2835
CRI	>80
Fixture Length*	
Standard	1 M
Max. Length	3 M
Beam Angle	120°
Lumen Maintenance	70,000 Hours L70 @ 25°C 50,000 Hours L70 @ 50°C
Temperature Ranges	
Installation	0°C to 50°C
Operating	-40°C to 55°C
Dependability	
Warranty	5 Years Warranty
IP Rating	IP20

## Optional Color

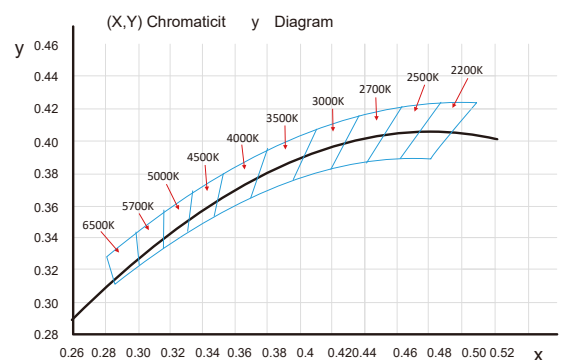


3000K(3000±150K)

## Lumen Output

1800lm/m

White Color Charts



# ALCSP03S02 Mono Color Silicone LED Linear Flex Fixture

## Connection

