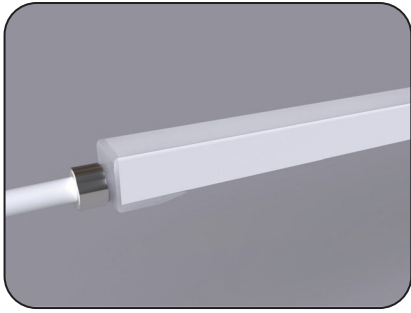
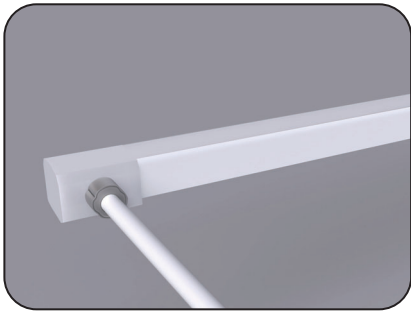
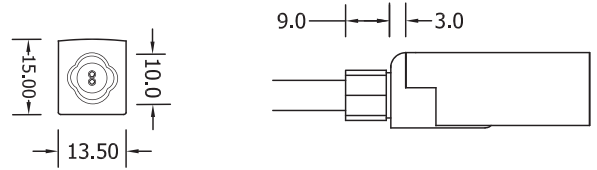


F10 Configuration and Accessories

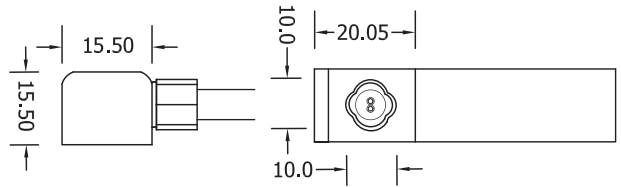
Mold Injection Connector (IP68 Factory Assembly Only)



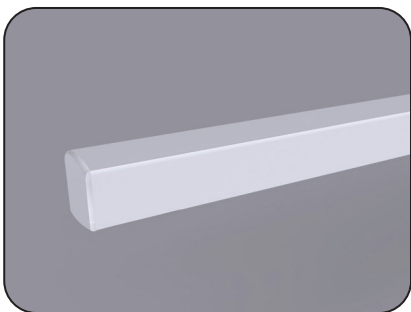
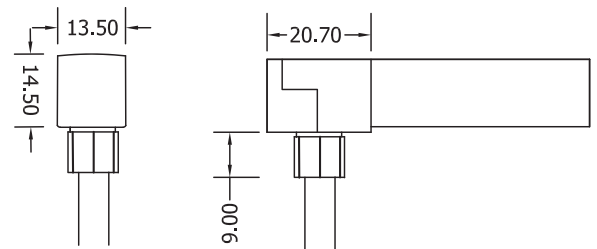
Direct Entry Connector
 MJ-10-A-D01/02/03
 MJ-10-A-D01SM
 MJ-10-A-D02SF
 MJ-10-A-D03SFM



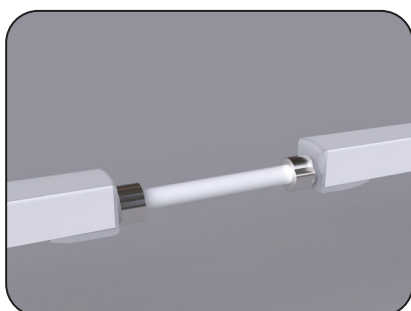
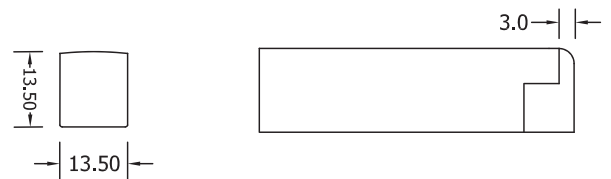
Side Entry Connector
 MJ-10-A-S01/02/03
 MJ-10-A-S01SM
 MJ-10-A-S02SF
 MJ-10-A-S03SFM



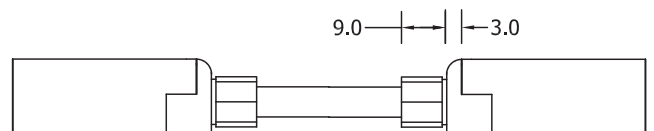
Bottom Entry Connector
 MJ-10-A-B01/02/03
 MJ-10-A-B01SM
 MJ-10-A-B02SF
 MJ-10-A-B03SFM



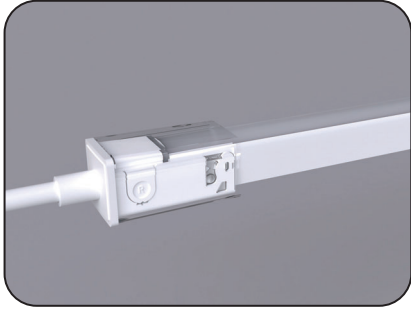
End Cap



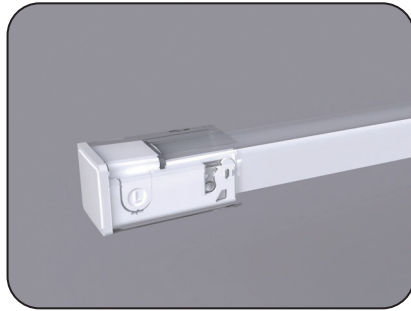
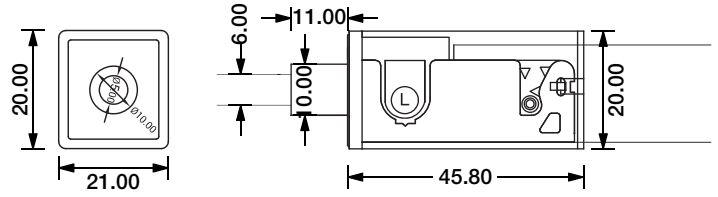
Jumper
 MJ-SF10-A-D-JC



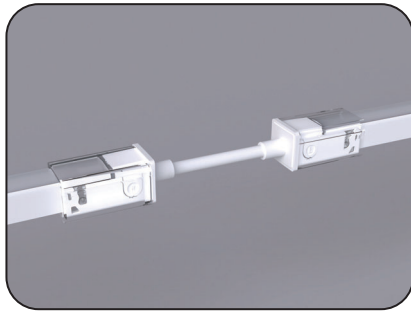
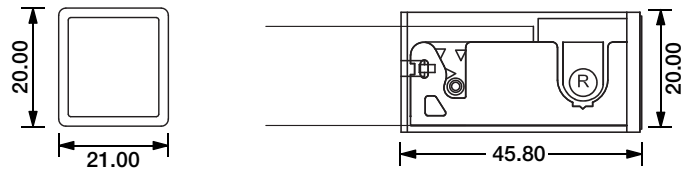
F10 Configuration and Accessories



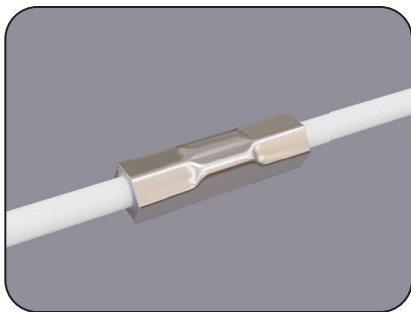
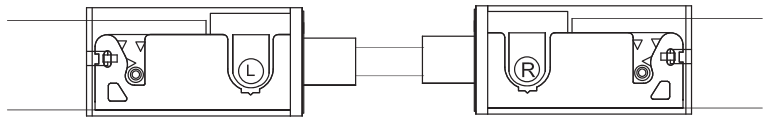
DIY Snap Connector
DIY-SN-FR-10-D-01/02-A



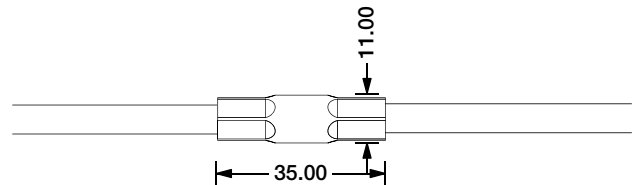
DIY Snap End Cap
DIY-SN-END-10-D-01/02



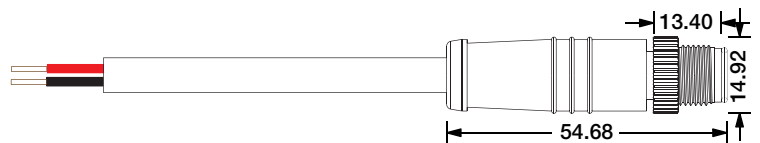
DIY Snap Extent Connector
DIY-SN-EXT-10-A



Waterproof Interrupter



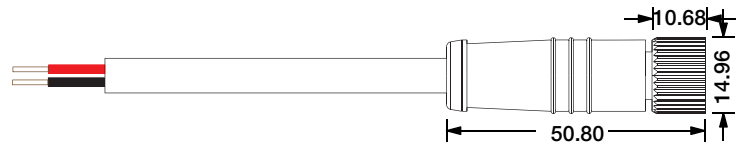
Male Connector
M12-M-2C-18AWG-D6-W-0327



F10 Configuration and Accessories

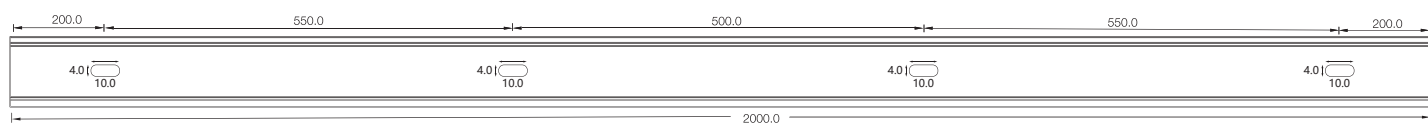
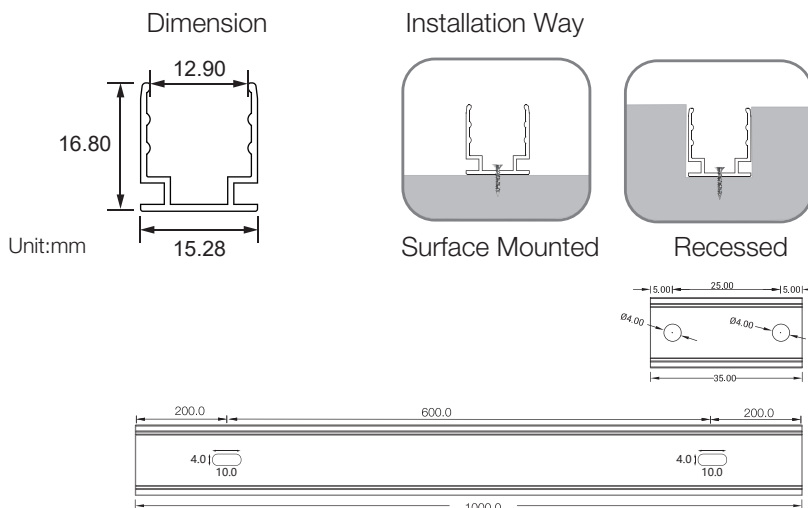


Female Connector
M12-M-2C-18AWG-D6-W-0327

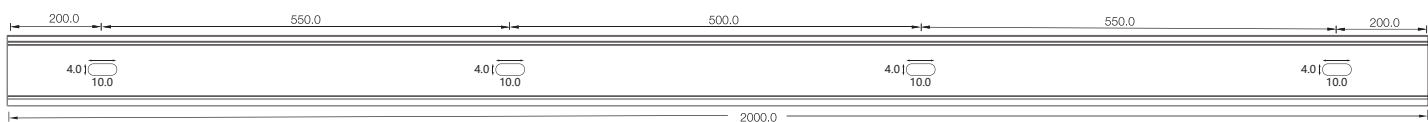
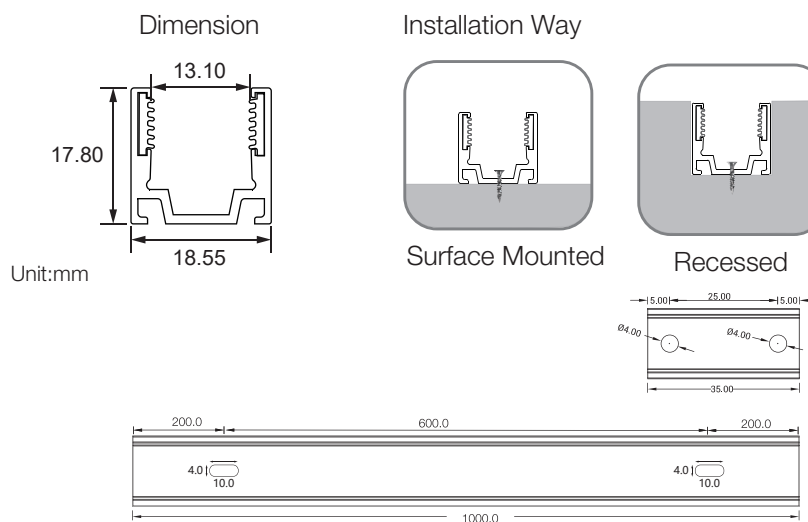


LED Linear Flex Mounting Channel

1. Aluminum Channel

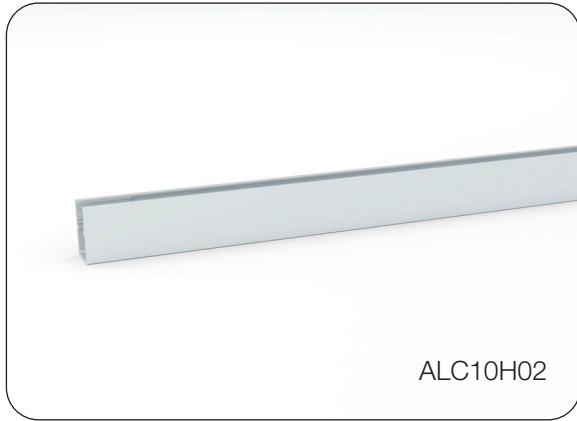


Model	W x H(mm)	Standard Length	Screw Holes	Holes Numbers	Suitable Product
ALC10S02-035	15.28*16.80	35mm	Φ4.0mm	2	F10, SF10
ALC10S02-100		1000mm	○4.0mm	2	F10, SF10
ALC10S02-200		2000mm	○4.0mm	4	F10, SF10

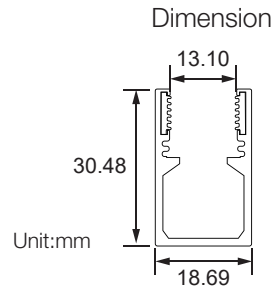


Model	W x H(mm)	Standard Length	Screw Holes	Holes Numbers	Suitable Product
ALC10S03-035	18.56*16.80	35mm	Φ4.0mm	2	F10, SF10
ALC10S03-100		1000mm	○4.0mm	2	F10, SF10
ALC10S03-200		2000mm	○4.0mm	4	F10, SF10

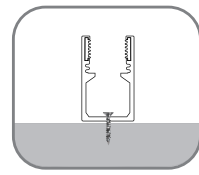
LED Linear Flex Mounting Channel



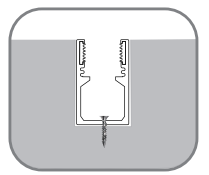
ALC10H02



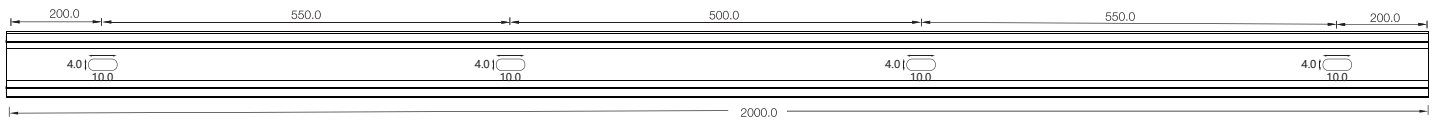
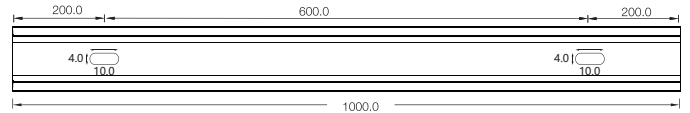
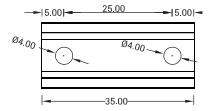
Installation Way



Surface Mounted

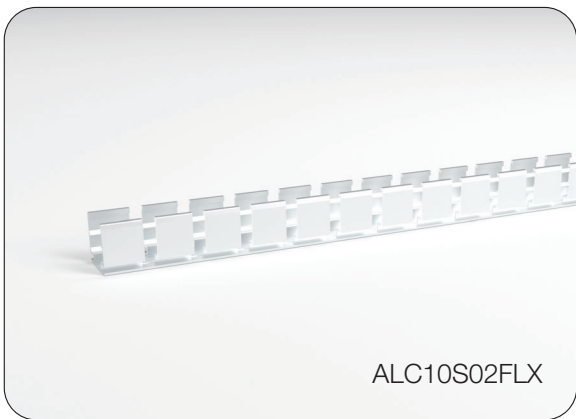


Recessed

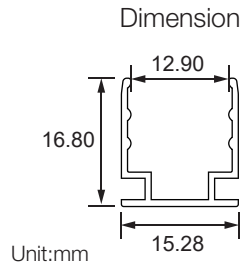


Model	W x H(mm)	Standard Length	Screw Holes	Holes Numbers	Suitable Product
ALC10H02-035	18.69*30.48	35mm	Φ4.0mm	2	F10, SF10
ALC10H02-100		1000mm	○4.0mm	2	F10, SF10
ALC10H02-200		2000mm	○4.0mm	4	F10, SF10

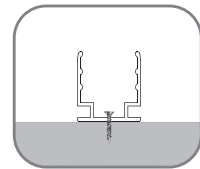
2. Flexible Aluminum Channel



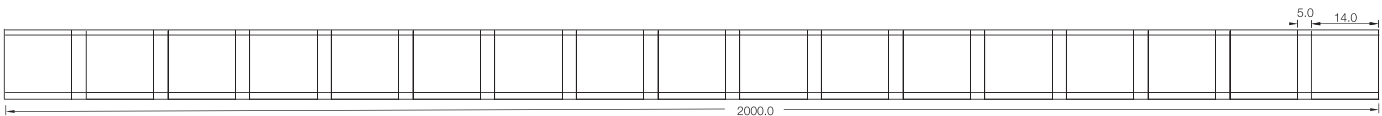
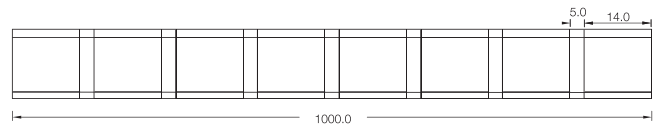
ALC10S02FLX



Installation Way



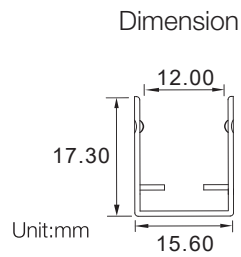
Surface Mounted



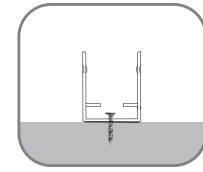
Model	W x H(mm)	Standard Length	Suitable Product
ALC10S02FLX05	15.28*16.80	500mm	F10, SF10
ALC10S02FLX10		1000mm	F10, SF10

LED Linear Flex Mounting Channel

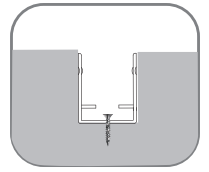
3. Stainless Steel Channel



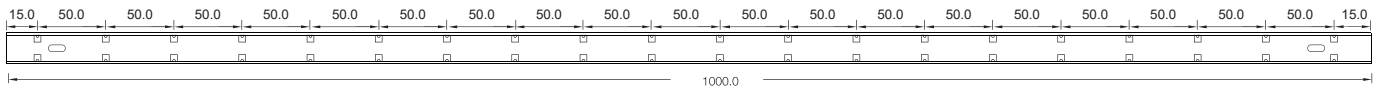
Installation Way



Surface Mounted



Recessed



Model	W x H(mm)	Standard Length	Screw Holes	Holes Numbers	Suitable Product
SSC10S01-100	15.60*17.30	1000mm	4.0x10mm	2	F10, SF10

LED linear Flex Packing Details



Standard: Carton (Paper Reel Inside)

Product	Max.Length	Carton Size	Net Weight	Gross Weight
F15/SF15	30m	34*34*18cm	12kg	13.6kg
F16/SF16	20m	34*34*18cm	8.6kg	10.2kg
F17/SF17	20m	34*34*18cm	8.6kg	10.2kg
F18/SF18	20m	34*34*18cm	8.6kg	10.2kg
F21/SF21	20m	34*34*18cm	10.4kg	12.0kg
F10/SF10	30m	34*34*18cm	9.6kg	11.2kg
SF09	35m	34*34*18cm	5.8kg	7.4kg
SF08	30m	34*34*18cm	7.2kg	8.8kg
SF06	30m	34*34*18cm	7.2kg	8.8kg



Custom: Carton (White Box+ Plastic Plate Inside)

Product	Package 1 Dimension	Length	Gross Weight	Package 2 Dimension	Length	Gross Weight
F15/SF15	38*38*3cm	5m	2.5kg	45*55*3cm	10m	5kg
F16/SF16	38*38*3cm	5m	2.6kg	51*61*4cm	10m	5.2kg
F17/SF17	38*38*3cm	5m	2.6kg	51*61*4cm	10m	5.2kg
F18/SF18	38*38*3cm	5m	2.6kg	51*61*4cm	10m	5.2kg
F21/SF21	38*38*3cm	5m	3.1kg	51*61*4cm	10m	6.2kg
F10/SF10	38*38*3cm	5m	2.0kg	45*55*3cm	10m	4kg
SF09	38*38*3cm	5m	1.5kg	45*55*3cm	10m	3kg
SF08	38*38*3cm	5m	1.5kg	45*55*3cm	10m	3kg
SF06	38*38*3cm	5m	1.5kg	45*55*3cm	10m	3kg