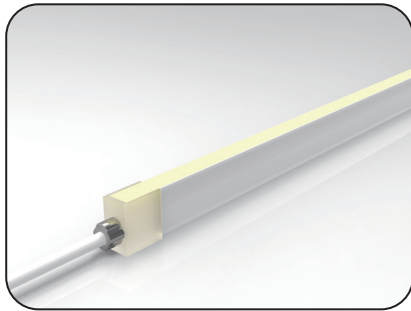
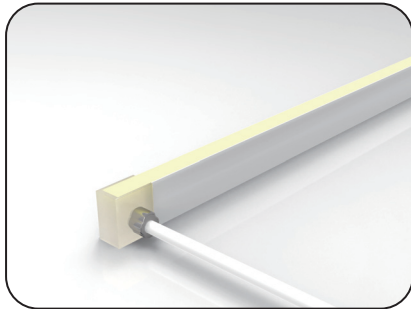
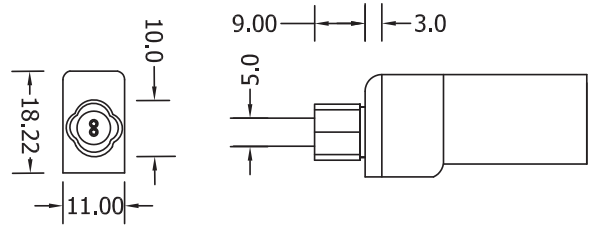


# F09 Configuration and Accessories

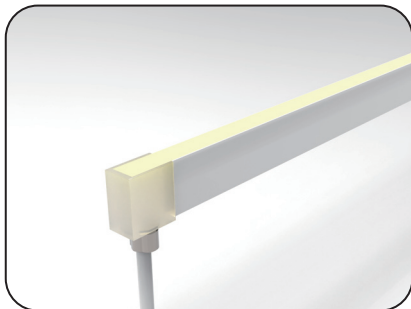
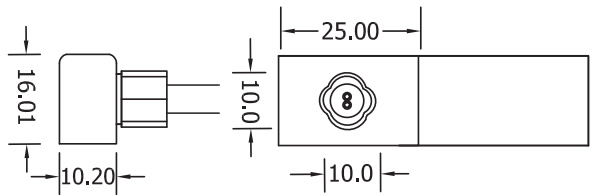
Mold Injection Connector (IP68 Factory Assembly Only)



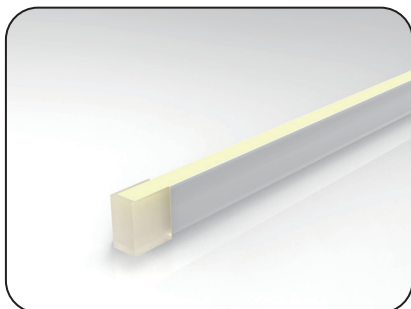
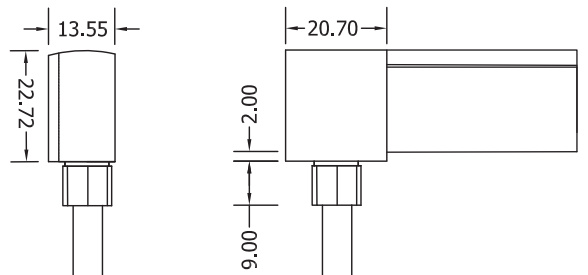
Direct Entry Connector  
 MJ-09-A-D01/02/03  
 MJ-09-A-D01SM  
 MJ-09-A-D02SF  
 MJ-09-A-D03SFM



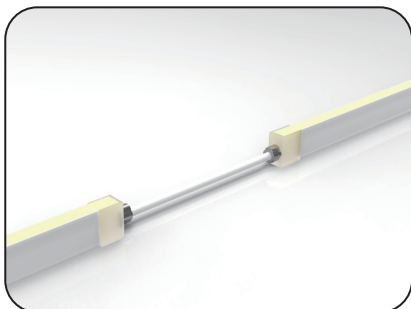
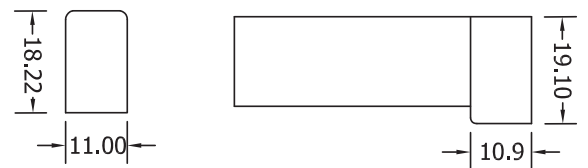
Side Entry Connector  
 MJ-09-A-S01/02/03  
 MJ-09-A-S01SM  
 MJ-09-A-S02SF  
 MJ-09-A-S03SFM



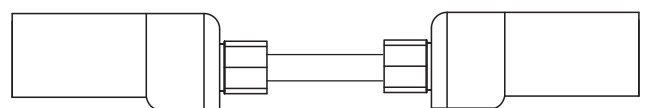
Bottom Entry Connector  
 MJ-09-A-B01/02/03  
 MJ-09-A-B01SM  
 MJ-09-A-B02SF  
 MJ-09-A-B03SFM



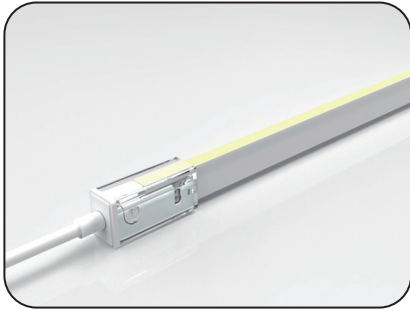
End Cap



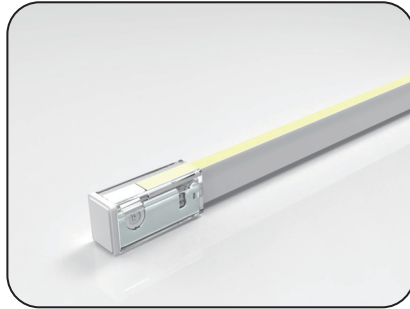
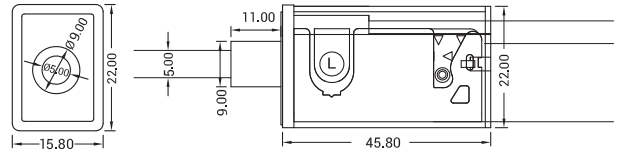
Jumper  
 MJ-09-A-D-JC



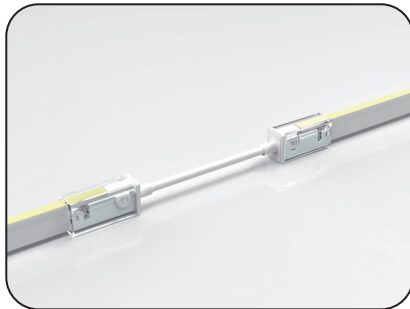
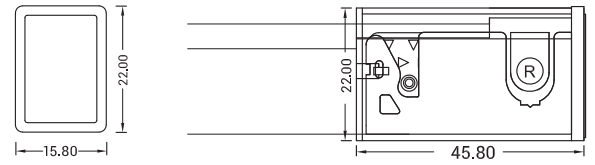
# F09 Configuration and Accessories



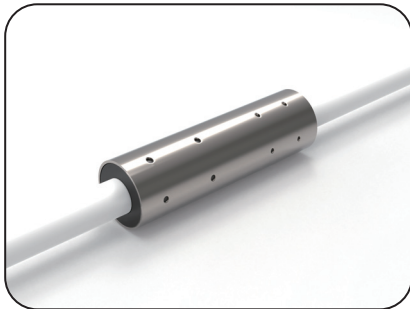
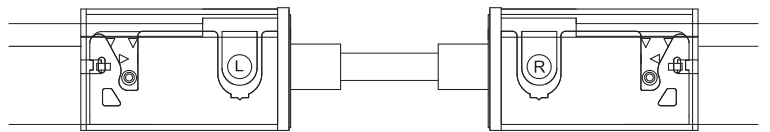
DIY Snap Connector  
DIY-SN-FR-09-D-01/02-A



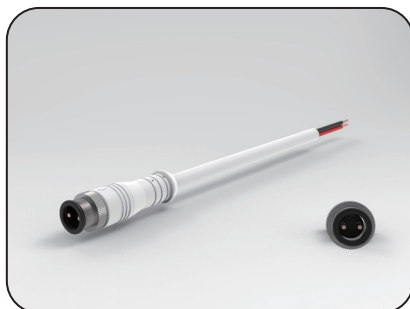
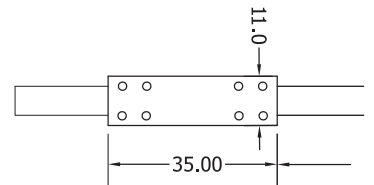
DIY Snap End Cap  
DIY-SN-END-09-D-01/02



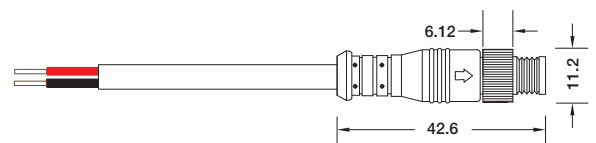
DIY Snap Connector Jumper  
DIY-SN-EXT-09-A



Waterproof Interrupter

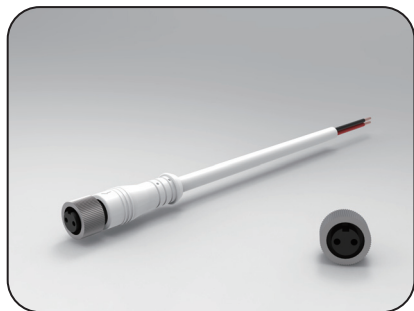


Male & Female Connector  
SYZ-M8-M-2C-05-W

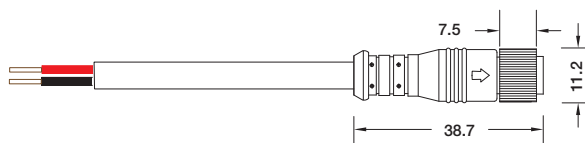


# F09 Configuration and Accessories

---

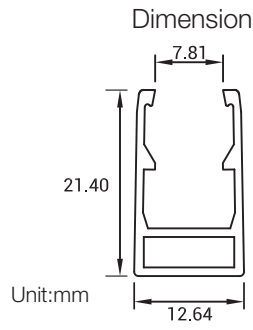
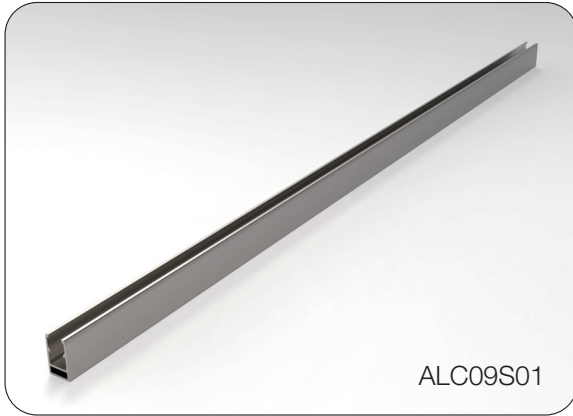


Male & Female Connector  
SYZ-M8-F-2C-05-W

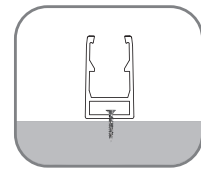


# LED linear Flex Mounting Channel

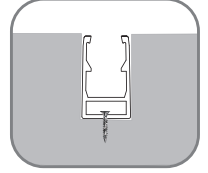
## 1. Aluminum Channel



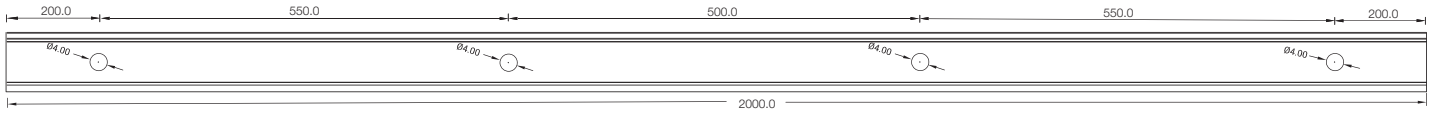
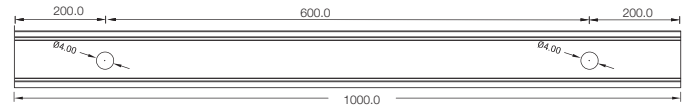
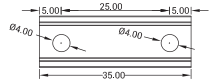
Installation Way



Surface Mounted



Recessed



Model	W x H(mm)	Standard Length	Screw Holes	Holes Numbers	Suitable Product
ALC09S01	12.64*21.4	35mm	Φ4.0mm	2	F09, SF09
		1000mm	Φ4.0mm	2	F09, SF09
		2000mm	Φ4.0mm	4	F09, SF09

# LED linear Flex Packing Details



Standard: Carton ( Paper Reel Inside)

Product	Max.Length	Carton Size	Net Weight	Gross Weight
F15/SF15	30m	34*34*18cm	12kg	13.6kg
F16/SF16	20m	34*34*18cm	8.6kg	10.2kg
F17/SF17	20m	34*34*18cm	8.6kg	10.2kg
F18/SF18	20m	34*34*18cm	8.6kg	10.2kg
F21/SF21	20m	34*34*18cm	10.4kg	12.0kg
F10/SF10	30m	34*34*18cm	9.6kg	11.2kg
F09/SF09	35m	34*34*18cm	5.8kg	7.4kg
F08/SF08	30m	34*34*18cm	7.2kg	8.8kg
F06/SF06	30m	34*34*18cm	7.2kg	8.8kg



Custom: Carton ( White Box+ Plastic Plate Inside)

Product	Package 1 Dimension	Length	Gross Weight	Package 2 Dimension	Length	Gross Weight
F15/SF15	38*38*3cm	5m	2.5kg	45*55*3cm	10m	5kg
F16/SF16	38*38*3cm	5m	2.6kg	51*61*4cm	10m	5.2kg
F17/SF17	38*38*3cm	5m	2.6kg	51*61*4cm	10m	5.2kg
F18/SF18	38*38*3cm	5m	2.6kg	51*61*4cm	10m	5.2kg
F21/SF21	38*38*3cm	5m	3.1kg	51*61*4cm	10m	6.2kg
F10/SF10	38*38*3cm	5m	2.0kg	45*55*3cm	10m	4kg
F09/SF09	38*38*3cm	5m	1.5kg	45*55*3cm	10m	3kg
F08/SF08	38*38*3cm	5m	1.5kg	45*55*3cm	10m	3kg
F06/SF06	38*38*3cm	5m	1.5kg	45*55*3cm	10m	3kg