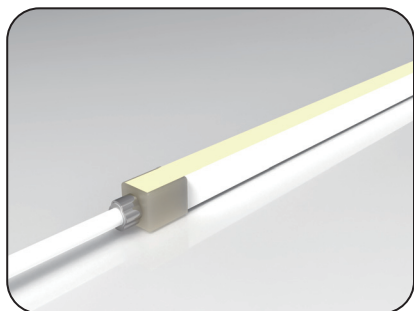
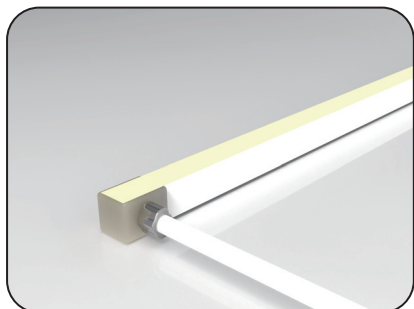
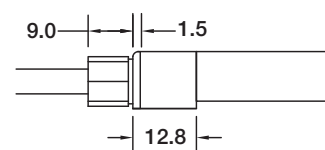
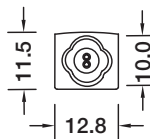


F08 Configuration and Accessories

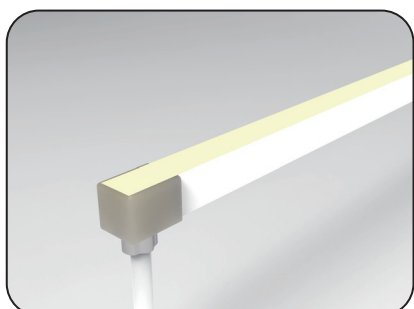
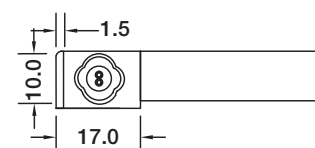
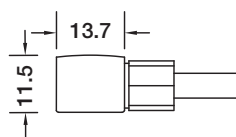
Mold Injection Connector (IP68 Factory Assembly Only)



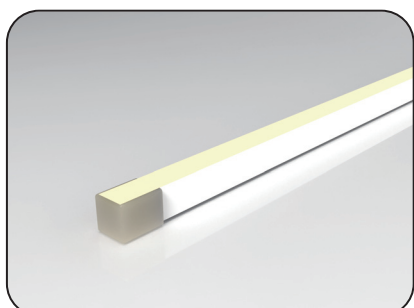
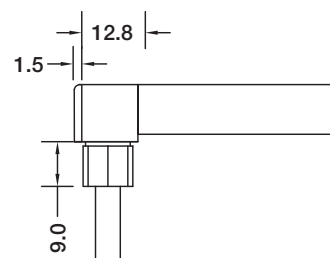
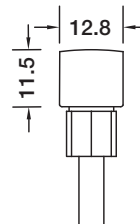
Direct Entry Connector
 MJ-08-A-D01/02/03
 MJ-08-A-D01SM
 MJ-08-A-D02SF
 MJ-08-A-D03SFM



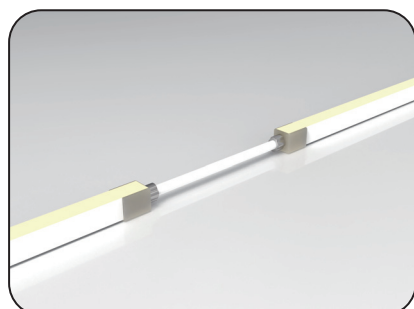
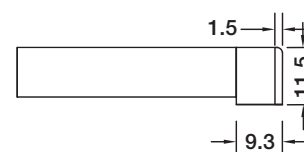
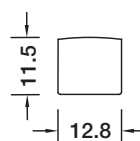
Side Entry Connector
 MJ-08-A-S01/02/03
 MJ-08-A-S01SM
 MJ-08-A-S02SF
 MJ-08-A-S03SFM



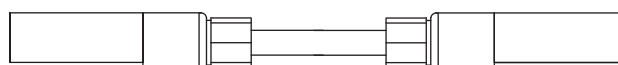
Bottom Entry Connector
 MJ-08-A-B01/02/03
 MJ-08-A-B01SM
 MJ-08-A-B02SF
 MJ-08-A-B03SFM



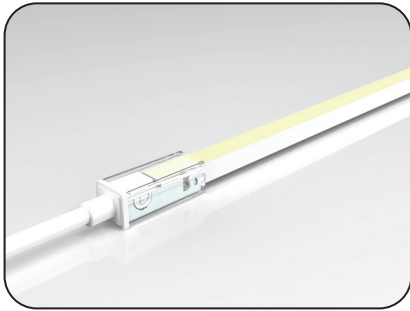
End Cap



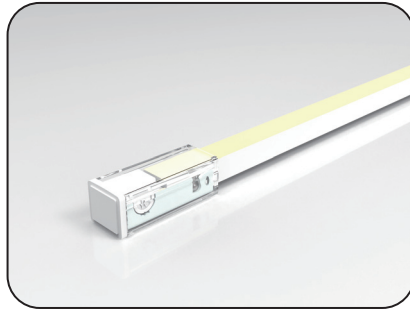
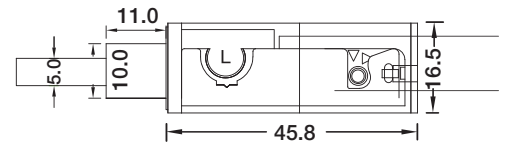
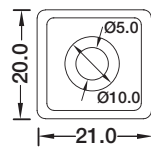
Jumper
 MJ-08-A-D-JC



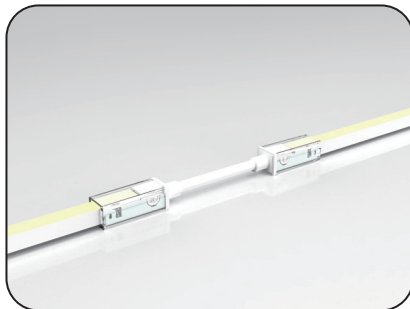
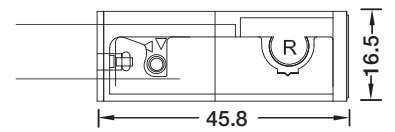
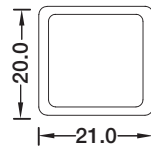
F08 Configuration and Accessories



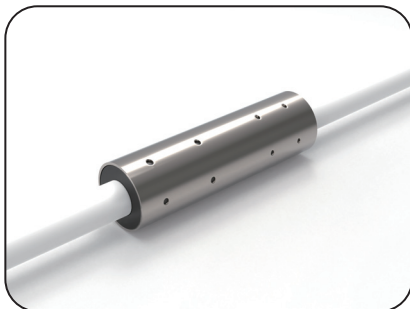
DIY Snap Connector
DIY-SN-FR-08-D-01/02-A



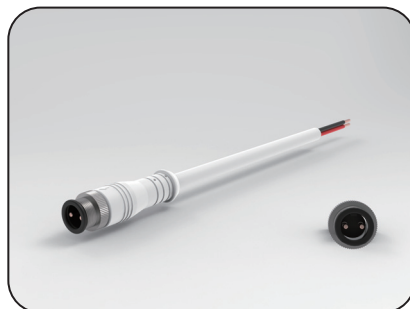
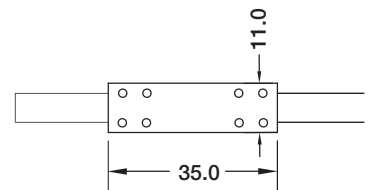
DIY Snap End Cap
DIY-SN-END-08-D-01/02



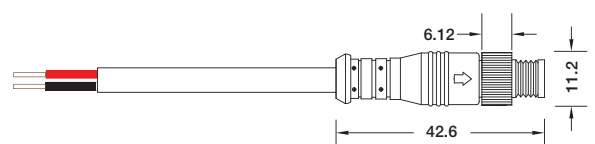
DIY Snap Connector Jumper
DIY-SN-EXT-08-A



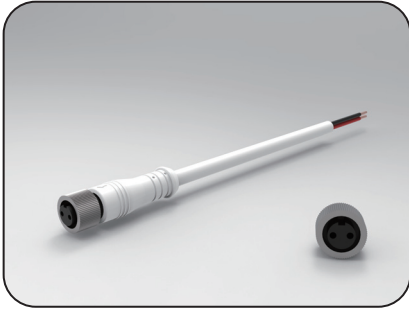
Waterproof Interrupter



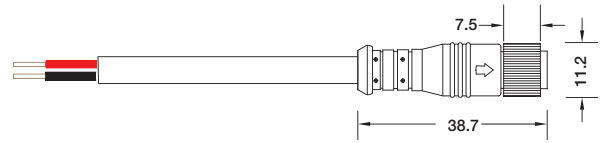
Male & Female Connector
SYZ-M8-M-2C-05-W



F08 Configuration and Accessories

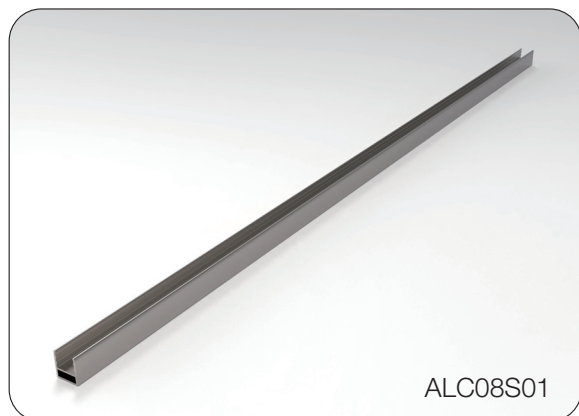


Male & Female Connector
SYZ-M8-F-2C-05-W

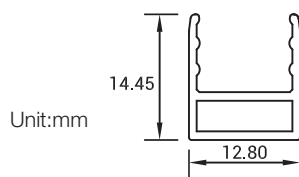


LED Linear Flex Mounting Channel

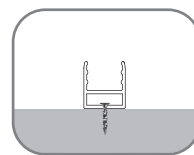
1. Aluminum Channel



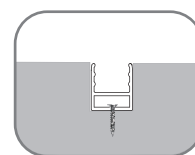
Dimension



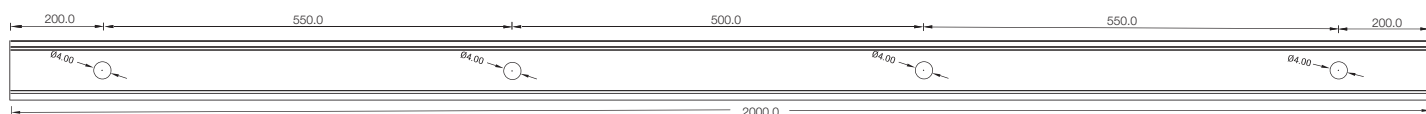
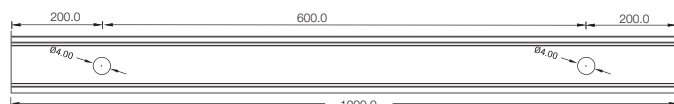
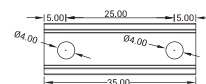
Installation Way



Surface Mounted



Recessed

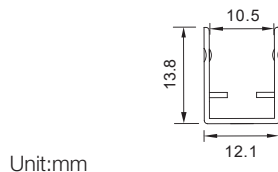


Model	W x H(mm)	Standard Length	Screw Holes	Holes Numbers	Suitable Product
ALC08S01-035	12.8*14.45	35mm	Φ4.0mm	2	F08, SF08
ALC08S01-100		1000mm	Φ4.0mm	2	F08, SF08
ALC08S01-200		2000mm	Φ4.0mm	4	F08, SF08

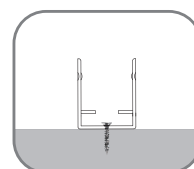
2. Stainless Steel Channel



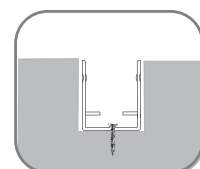
Dimension



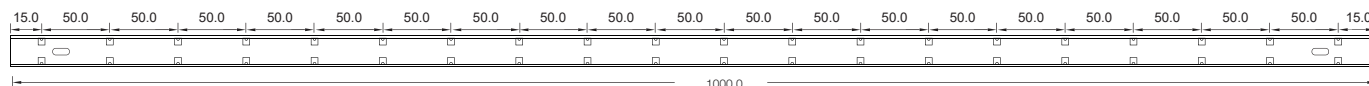
Installation Way



Surface Mounted



Recessed



Model	W x H(mm)	Standard Length	Screw Holes	Holes Numbers	Suitable Product
SSC06/08S01-100	12.1*13.8	1000mm	4.0x10mm	2	F08, SF08

LED linear Flex Packing Details



Standard: Carton (Paper Reel Inside)

Product	Max.Length	Carton Size	Net Weight	Gross Weight
F15/SF15	30m	34*34*18cm	12kg	13.6kg
F16/SF16	20m	34*34*18cm	8.6kg	10.2kg
F17/SF17	20m	34*34*18cm	8.6kg	10.2kg
F18/SF18	20m	34*34*18cm	8.6kg	10.2kg
F21/SF21	20m	34*34*18cm	10.4kg	12.0kg
F10/SF10	30m	34*34*18cm	9.6kg	11.2kg
F09/SF09	35m	34*34*18cm	5.8kg	7.4kg
F08/SF08	30m	34*34*18cm	7.2kg	8.8kg
F06/SF06	30m	34*34*18cm	7.2kg	8.8kg



Custom: Carton (White Box+ Plastic Plate Inside)

Product	Package 1 Dimension	Length	Gross Weight	Package 2 Dimension	Length	Gross Weight
F15/SF15	38*38*3cm	5m	2.5kg	45*55*3cm	10m	5kg
F16/SF16	38*38*3cm	5m	2.6kg	51*61*4cm	10m	5.2kg
F17/SF17	38*38*3cm	5m	2.6kg	51*61*4cm	10m	5.2kg
F18/SF18	38*38*3cm	5m	2.6kg	51*61*4cm	10m	5.2kg
F21/SF21	38*38*3cm	5m	3.1kg	51*61*4cm	10m	6.2kg
F10/SF10	38*38*3cm	5m	2.0kg	45*55*3cm	10m	4kg
F09/SF09	38*38*3cm	5m	1.5kg	45*55*3cm	10m	3kg
F08/SF08	38*38*3cm	5m	1.5kg	45*55*3cm	10m	3kg
F06/SF06	38*38*3cm	5m	1.5kg	45*55*3cm	10m	3kg